

Snapshot™



Universal ATP Testing Device

Designed to help companies conducting ATP monitoring with a non-Hygiena luminometer, reduce costs and achieve more accurate results. Snapshot works exactly the same as the test device it is replacing so there is no need to adjust Pass/Fail setting.

Key Features

- Simple, quick, and user-friendly
- Unique liquid-stable reagent provides unprecedented accuracy and reproducibility
- 12-month shelf life at refrigerated temperatures (2-8°C)
- 4-week shelf life at room temperatures (21°C)
- Tolerant to temperature abuse
- No need to change Pass/Fail setting - Snapshot works exactly the same as the test it is replacing
- Costs up to 40% less than competitors ATP tests

Snapshot works with the following luminometers:

- BioControl
- Biotrace
- Charm
- Merck

**COMPATIBLE WITH
ALL INSTRUMENTS
COSTS UP TO
40%
LESS**



Americas

941 Avenida Acaso
Camarillo, CA 93012
USA

Tel: 805.388.8007

Fax: 805.388.5531

Email: enquiries@hygiena.net

Web: www.hygiena.net

Europe

Unit 11 Wenta Business Centre
Colne Way Watford
Hertfordshire WD2 4ND UK

Tel: +44 (0)1923 818821

Fax: +44 (0)1923 818825

Email: enquiries@hygiena.net

Web: www.hygiena.net

ORDER

Charm -	CH1616N
3M / Biotrace -	SPXL1333
BioControl -	SBC1575
Merck -	SHL1414

(100 tests per box)

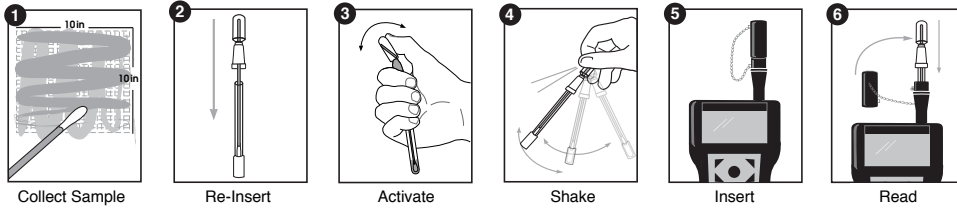
Snapshot Instructions

Snapshot™

Part Number: CH1616N

For Use With: Charm NovaLUM, FireFly, FireFly 2™, LUMinator T Luminometers

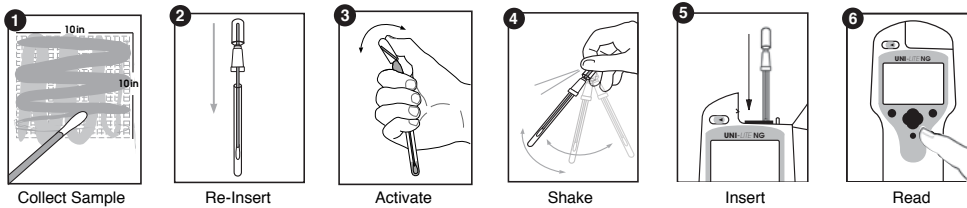
Cap sold separately



Snapshot™

Part Number: SPXL1333

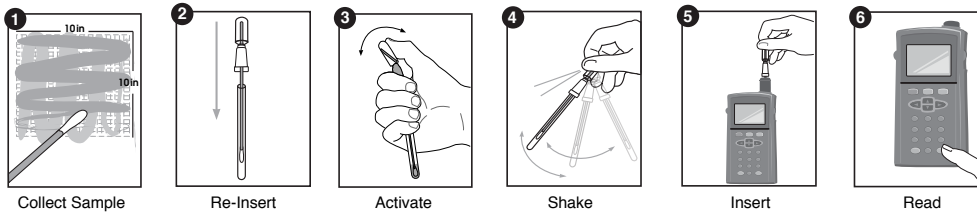
For Use With: 3M/Biotrace Unilite NG, Unilite XCEL, Unilite Luminometers



Snapshot™

Part Number: SBC1575

For Use With: BioControl Lightning MVP™ & Lightning Luminometers



Snapshot™

Part Number: SHL1414

For Use With: Merck HY-LITE 2 Luminometer

