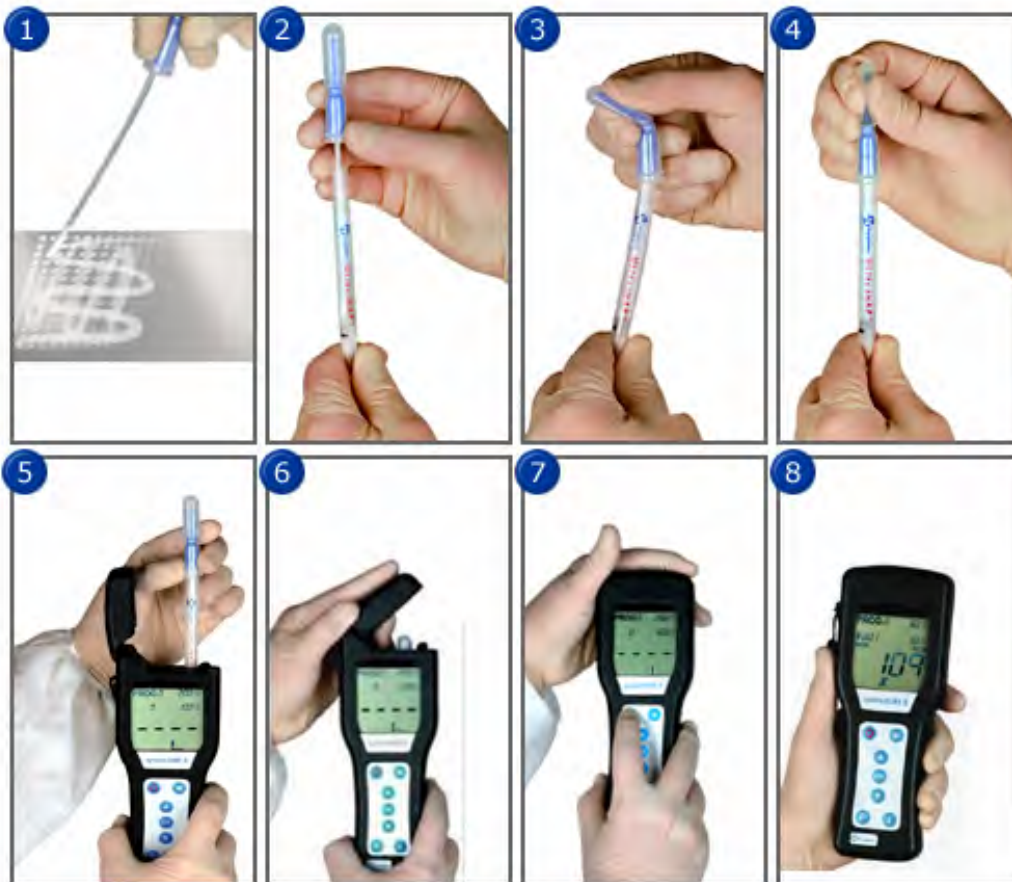




hygiena

Rapid Solutions for Food Safety

systemSURE II™ Operating Procedures



1. Swab sample point. 10cm x 10cm square.
2. Place swab back in swab tube.
3. Holding the swab tube firmly, use the thumb and forefinger to break the Snap Valve™ by bending the bulb forward and backwards.
4. Squeeze Snap Bulb twice, expelling all liquid down swab shaft. Bathe swab bud for 5 seconds.
5. Place Ultrasnap swab in systemSURE II.
6. Close lid of systemSURE II.
7. Initiate 15 second reading by pressing 'OK'.
8. Reading will be displayed with threshold levels and sign indicating Pass, Caution or Fail.